



Slippery slidey shoes

Oops! Gem and Cosmic have slipped on the floor.



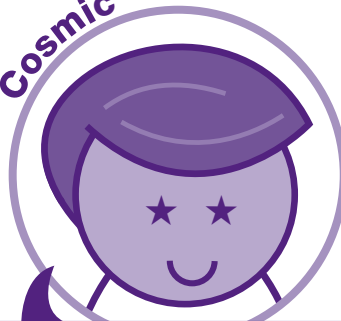
- ★ Have you ever slipped over?
- ★ Why was this?
- ★ Why do you think Gem and Cosmic slipped?

Gem



I think it is because the floor is made of wood

Cosmic



I think that the caretaker has put polish on the floor

Caretaker



I think it is the kind of shoes that you are wearing

★ What do you think?

Talk about

- ★ Talk to a buddy about your ideas.



★ Your challenge

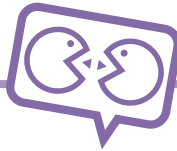
Gem has a great idea – have a competition to find the best non-slip shoe.





Talk about

- ★ Talk to your buddy about the shoe that you think will be the best – try to choose one between you.



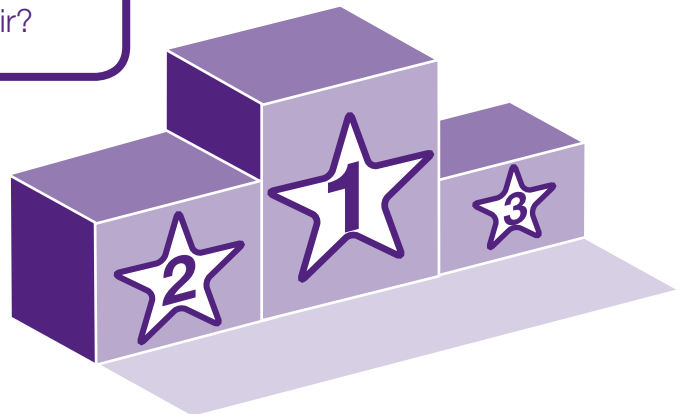
★ Here's one way to find out

- ★ Set up a ramp.
- ★ Put two shoes on the ramp and try to find which one isn't very slippery.
- ★ Keep trying until you find the best non-slip shoe.
- ★ How can you make sure that everything is fair?

★ Can you think of other ways to find out?

★ Share your ideas

Put your best shoe on the winners' podium.



Congratulations!

You are a slippery slidey scientist.

Collect your stickers and get ready for your next challenge.

★ Here are some extra things to do

- ★ Find out more about shoes for different purposes.
- ★ Do some shoes need to be slippery?
- ★ Can you find out different ways to stop surfaces being slippery?