



Plant detectives

Cosmic has found a plant growing out of the pavement. He can't work out how it got there. Plants grow in gardens, not pavements – don't they? Cosmic and Gem need to be plant detectives and look for clues! But where should they look to solve the mystery?

★ Where have you seen plants growing?

★ Have you ever seen any plants growing in a pavement?



Cosmic

I think plants only grow in gardens

Aunt Stella

I think plants might grow in lots of different places

Gem

I think plants only grow where people plant seeds

★ What do you think?

★ Your challenge

Become a plant detective and help Cosmic and Gem solve the mystery of where plants grow.

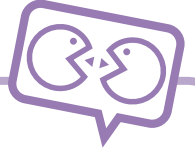
Talk about

★ Talk together about your ideas.



★ **Here's what you can do**

- ★ Have a good look around outside.
- ★ Look up and down, in corners, on buildings and patches of land.
- ★ Remember, clues about plants might be hidden anywhere!
- ★ Can you find any plants with flowers?
- ★ Where is the strangest place you can find a plant growing?
- ★ Do you notice anything about where you find plants growing?
- ★ How can you make sure that everyone stays safe?



Talk about

- ★ Plan where you will go on your plant hunt.

★ **Share your ideas**

Take photographs or draw pictures of the plants you find to make a plant detective album. Mark on a map where you found the plants.

★ **If you find any plants, can you work out how they got there?**



Congratulations!

You are a puzzling plant detective.

Collect your stickers and get ready for the next challenge.

★ **Here are some extra things to do**

- ★ Try to discover the names of the plants you found.
- ★ Try to find out if plants always need soil to grow.
- ★ Would you find different plants at different times of year?

